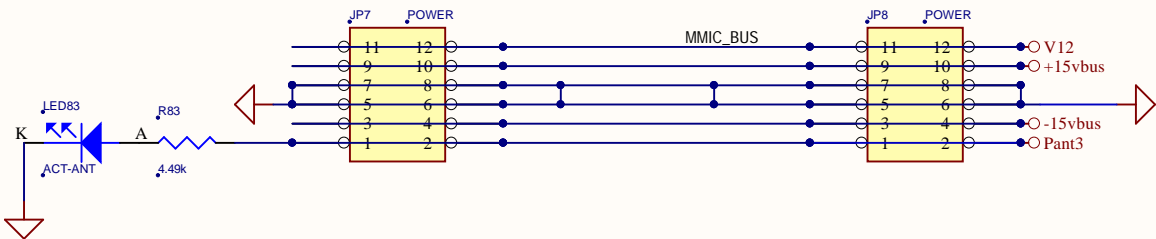
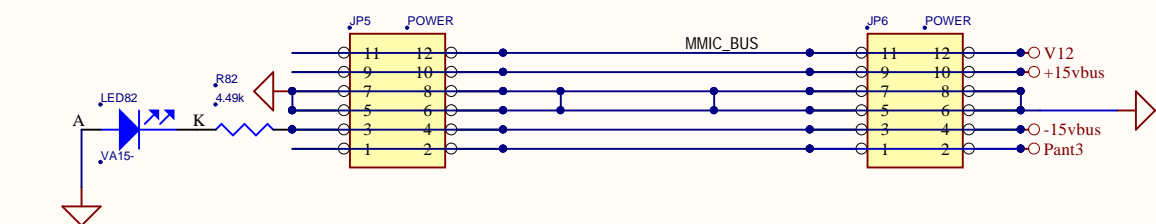
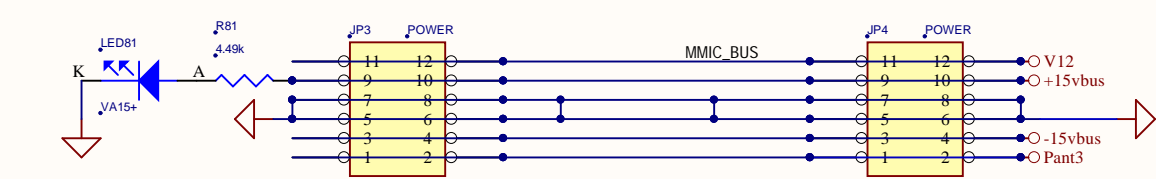
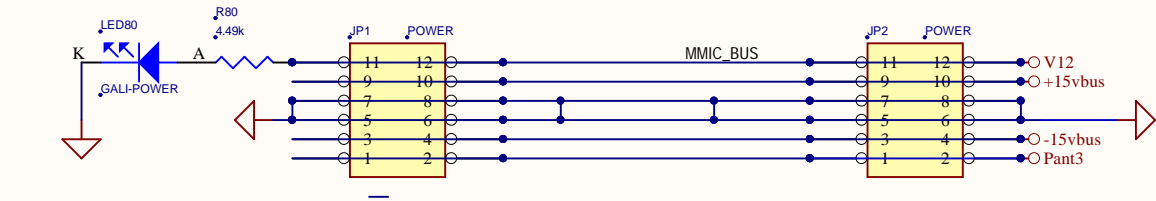


POWER BUS

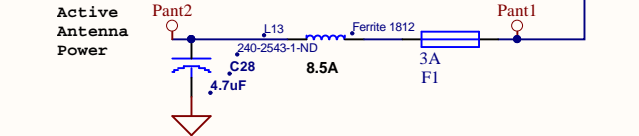
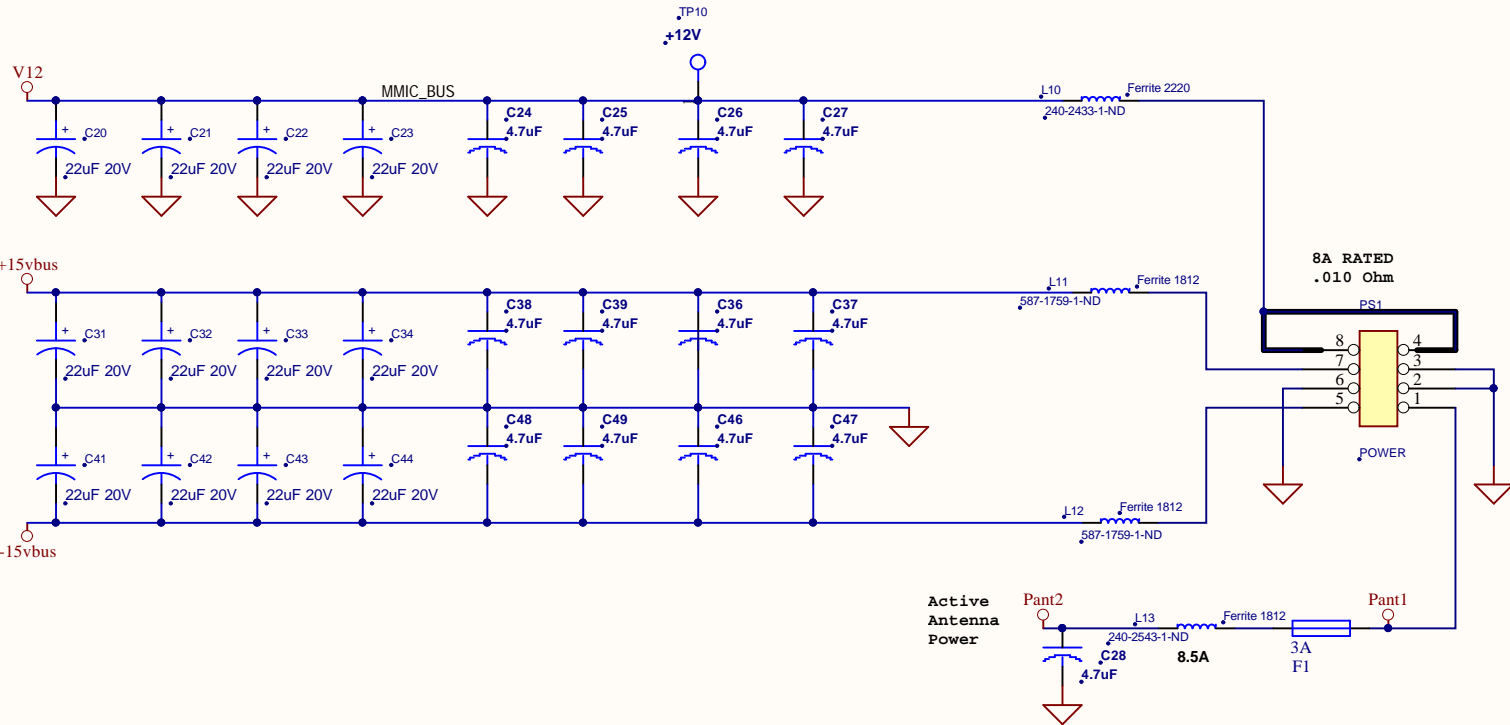
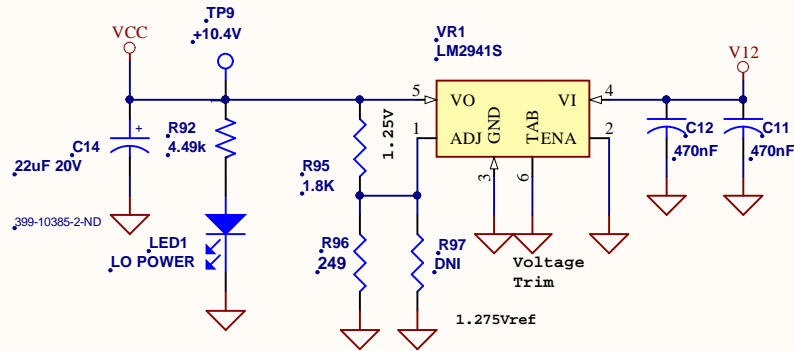
Samtec SSW-106-02-L-D-RA



587-1759-1-ND
3A RATED
.060 Ohm
1300 @ 100M
size 1812

240-2543-1-ND
8.5A RATED
.0063 Ohm
Z = 100 @ 10M
size 1812

240-2433-1-ND
8.0A RATED
.010 Ohm
Z = 800 @ 100M
size 2220



THIS CIRCUIT IS ON THE BACKPLANE.

